

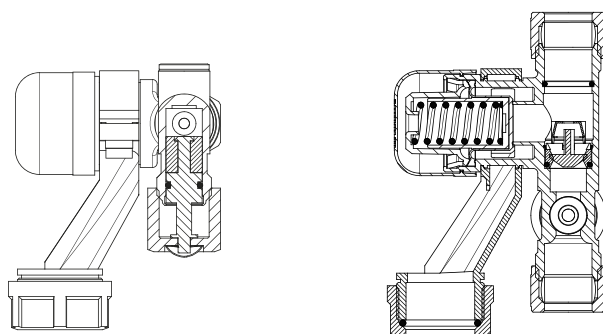
INLET COMBINATION



SOLID FUNNEL



SUPERIEUR IN PRIJS & KWALITEIT




BENEFITS

- The BONFIX inlet combination is easy to install. Well-positioned spanner faces allow for quick and easy tightening of the buckle nuts on the compression fittings.
- The combination is provided with two extra fittings to enable the funnel to be connected to every type of drain.
- The funnel is fully rotatable (360°) which enables the inlet combination always to be mounted in the desired position.
- Thanks to compact standard in-built dimensions the BONFIX inlet combination can be installed in lieu of any other system.

INSTALLATION INSTRUCTIONS

Please observe the following instructions to assure proper functioning of the connection set:

- Installation must occur with all pressure relieved from the system.
- Make sure the pipes have been thoroughly rinsed and compression tested.
- Connect the connection set to the cold water supply on the hot water appliance, taking account of the flow direction. The KIWA certified non-return valve assures that no water is able to flow back into the cold water supply. The non-return valve must be periodically inspected with the aid of the inspection plug on the non-return valve.
- Always install the funnel in vertical position. The drain can be connected directly to the funnel.
- Water will drip into the funnel during heating. This must NOT be prevented.

 *Use appropriate tools for installation and prevent damage.*

Warranty and liability

Warranty and liability apply as per our general terms and conditions.

Damage caused by stress corrosion is not covered under product warranty.

Using excessive force when tightening a coupling nut may result in breakage or leakage.

INTRODUCTION

BONFIX B.V. supplies a large range of BONFIX safety valves under the BONFIX brand name.

TECHNICAL INFORMATION

The technical specifications are based on the current industry and regulatory status. BONFIX B.V. reserves the right to modify technical specifications without prior notice. No rights can be derived from the technical information provided in this brochure.

PRODUCT USAGE

The BONFIX boiler connection set is designed for installation on all type of water heating systems with a maximum capacity of 75kW, in conformity with EN 1488. The appliance may be electric, gas-fired or indirectly heated.

TECHNICAL SPECIFICATIONS

- KIWA certified as per NEN 1488.
- Maximum operating pressure 8 bar.
- Maximum operating temperature +90 °C.
- Noise class II.
- 360 degree rotating, solid funnel.
- Maximum capacity [flow rate] 2,500 l/h at 1 bar (10 kPa) pressure difference.

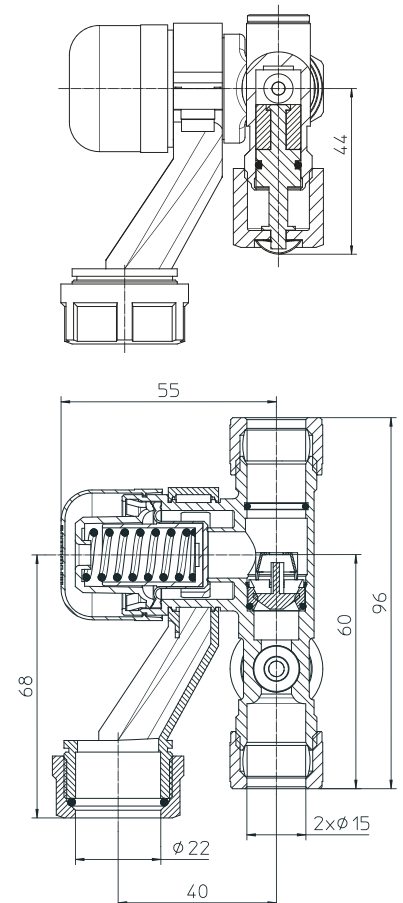
MULTIPLE CONNECTIONS

The BONFIX boiler connection set is standard provided with a 2x15mm compression fitting. The funnel can be connected to various diameters, e.g.:

- Ø 15 mm pipe.
- Ø 16 mm hose.
- Ø 22 mm pipe.

QUALITY MARK

The BONFIX boiler inlet combination bears the KIWA quality mark.



bonfix[®] *Superieur*



SUPERIOR IN PRICE & QUALITY



LIKE BONFIX ON FACEBOOK

- ✓ Always up to date on new products
- ✓ Fun actions and specials
- ✓ Direct contact with BONFIX staff OR
- ✓ Visit our website: www.bonfix.eu